



# Head Lamp Installation Guide

---

*This document explains the steps that need to be performed to ensure precise installation of the Jaguar XK Projector headlight system.*

## Step 1: Remove the existing head lights

To remove the existing headlights per form the following steps:

1. Turn the steering wheel to full lock, as follows:
  1. Right-hand headlamp – left-hand lock.
  2. Left-hand headlamp – right-hand lock.

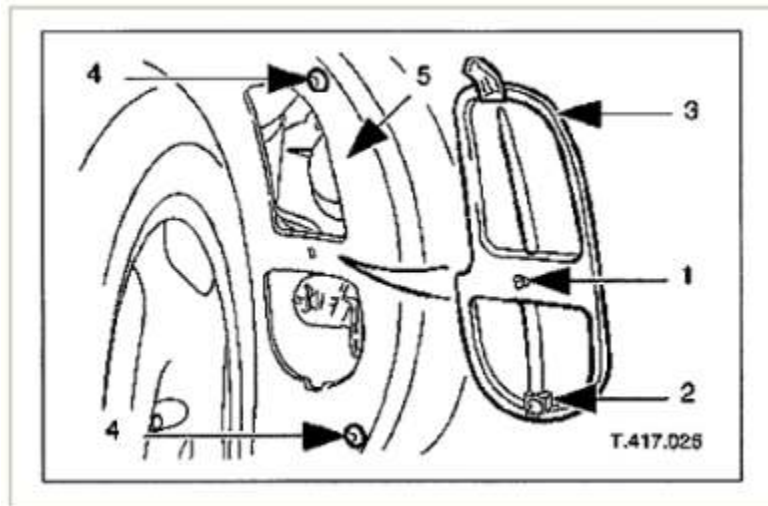


Figure 1

2. Displace the wheel arch liner for access.
  1. Remove the headlamp access panel cover by turning the T nut located at position 1 as displayed in Figure 1 until the cover comes free.
  2. Lift the lower retaining catch and disconnect the lower edge of the access panel from the wheel arch liner.
  3. Remove the access panel.
  4. Remove the fixings which secure the front of the wheel arch liner to the body.
  5. Reposition the wheel arch liner for access.

*NOTE: Removing the wheel arch liner from the body is not really necessary but it does make things a little easier.*

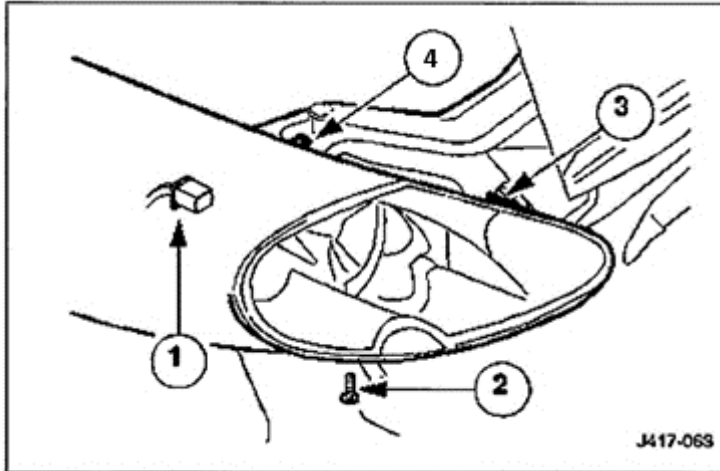


Figure 2

3. Remove the headlamp.

1. The first nut is located at the bottom of the headlamp at position 2 as displayed in Figure 2. This nut is accessed via the headlamp access panel you just removed.

*NOTE: This nut is in a very awkward location and can be quite hard to remove.*

2. Once you have the lower nut removed, remove the nut located at position 3 as displayed in Figure 2.

This nut is attached to a bracket mounted onto the inner side of the engine frame as displayed in Figure 3.

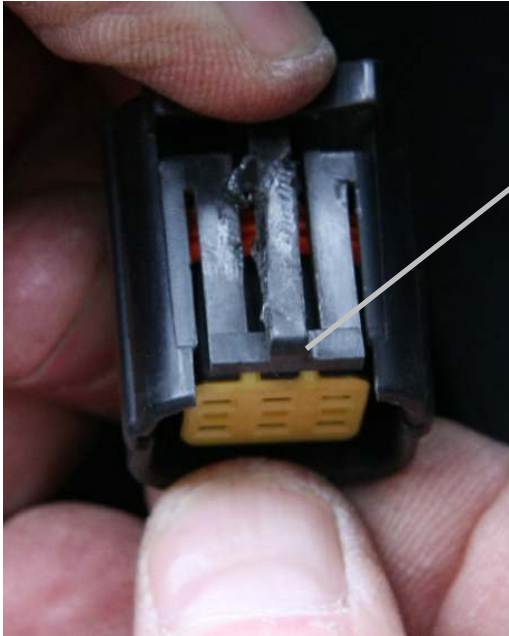
*NOTE: Do not discard this nut as you will need to reuse it to install the new headlamp.*



Figure 3

3. With this nut removed, unscrew the bolt located at position 4 as displayed in Figure 2.
4. Now gently pull the headlamp towards the front of the car until it comes free.
5. If your car has headlamp washers, carefully disconnect the washer jet assembly from the headlamp and reposition clear of the headlamp.
6. With the headlamp free, unclip the electrical wire plug.

*NOTE: The plug has a clip mechanism on the back of it, and you have to lift the clip up to release the connectors.*



Lift this edge up to release the connector.

Figure 4

You should now have the old headlamp removed.

## Step 2: Install the new headlights.

To install the new headlights perform the following steps:

1. Attach the rubber seal provided.



Figure 5

The rubber seals can be found in the bag included in the package. The seals come joined together, so take the seals and gently pull them apart so you end up with two seals, one for each side. This leaves a 'clean' side and a slightly rough side. Make sure the 'clean' side is to the outside for a smooth look.

Before attaching the seal, you need to clean the surface area that you will be attaching the seal to.

Run your finger around the edge starting at the 'tip' of the wing and work around the edge. You will notice that there is a small lip; this is the area where you will be attaching the seal.

*NOTE: Even though the lip is small, don't worry the seal will stick. These things are REAL sticky.*

With the surface clean the seal should be attached by starting at the 'tip' of the wing and working your way around the edge, then tucking the last inch under where the light will go over the bumper as shown in figure 6, indicated by the white arrow.

Figure 7 shows the seal in place.



Figure 6







Figure 7

2. With the seal in place, take the new headlamp and position it in the headlight opening.
3. Connect the electrical plug.
4. Now gently wriggle the headlamp into place, making sure you line up the U bracket with the bolt attached to the bracket mounted onto the inner side of the engine frame as displayed in Figure 3 above.
5. Align the headlamp so that it is positioned correctly, i.e. it is positioned snugly to the rubber seal. Then take the nut from the U bracket, and screw the nut onto the bolt securing it tightly.
6. Now take the top bolt that was supplied and screw it into place.
7. Check that the headlamp is aligned and positioned properly and now tighten the adjustable screw until it is nice and tight.

Once you have done all this you should have the headlamp securely in place.

Repeat for the other side.

Now make sure you get your new lights aligned correctly and you are then good to go. Enjoy.







Daytime LED driving lights



Low Beam + Daytime LED driving lights



Low Beam + High Beam + Daytime LED driving lights



Low Beam + High Beam + Daytime LED driving lights + Hazards